

# Google API

## Why Google API?

- User has an excellent option to invite their friends using his/her Google account details to promote the particular site.
- The main purpose of Google API is User's Convenience; Through Google API User can easily get the email addresses of his/her contacts.
- Google API provides Authentication and Security for User's personal details so it is totally secured.

## Steps to Create Google API

### Step -1

- User has to navigate <https://Google.com/>

### Step -2

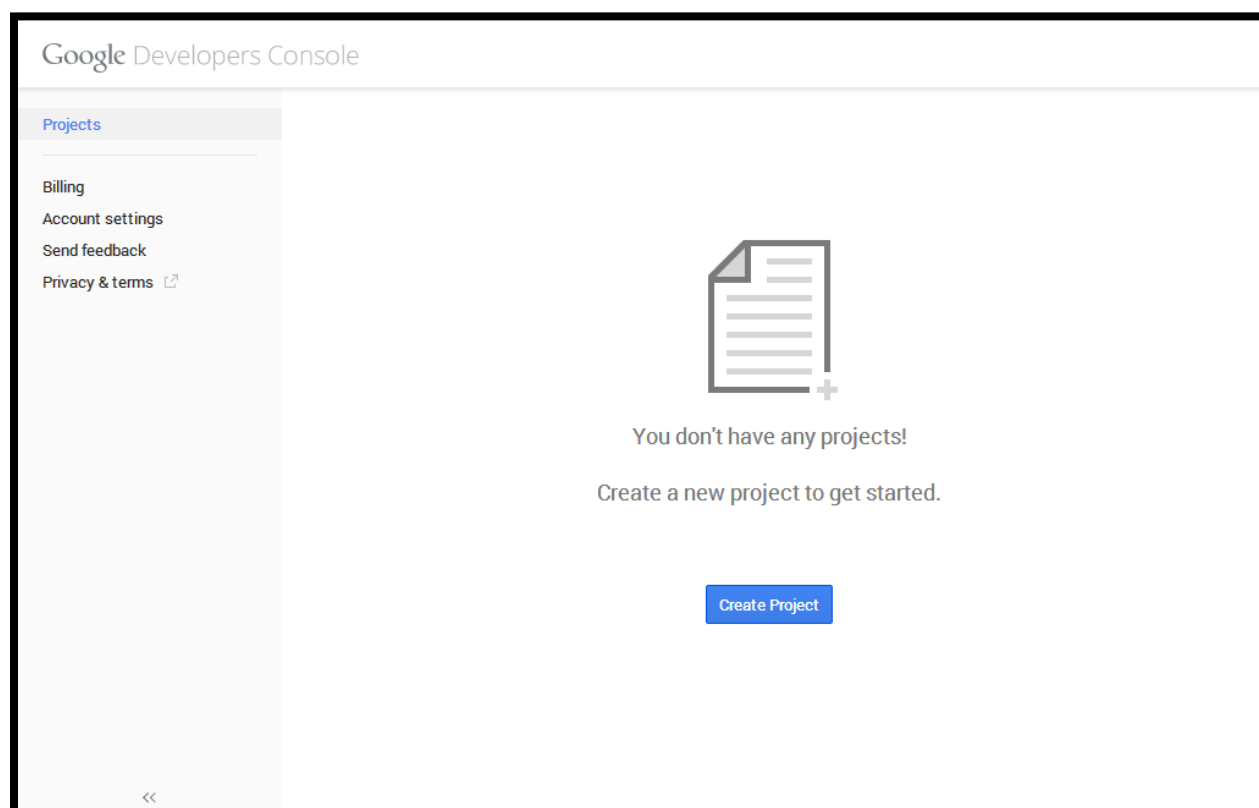
- User has to Login in with his/her Valid User Name & Password.

### Step -3

User has to navigate <https://console.developers.google.com/>

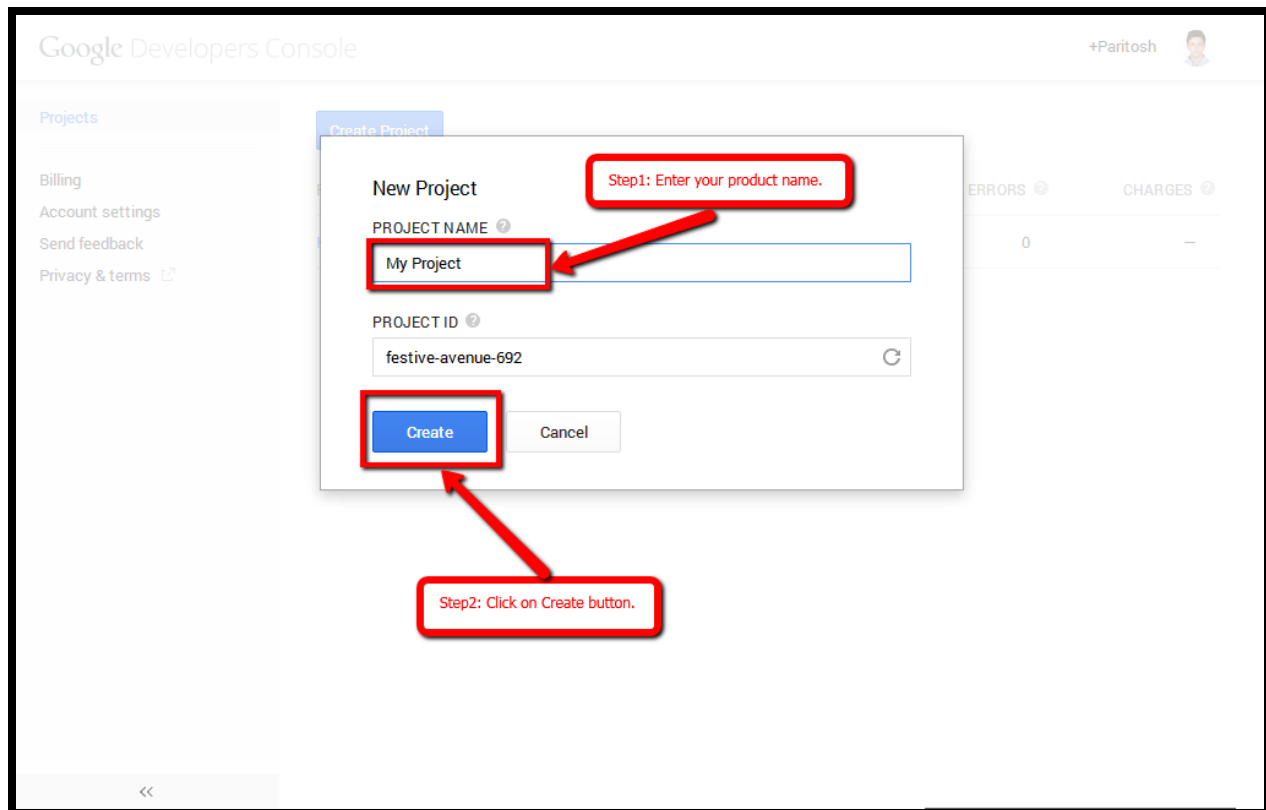
### Step -4

- Click on Create Project button.



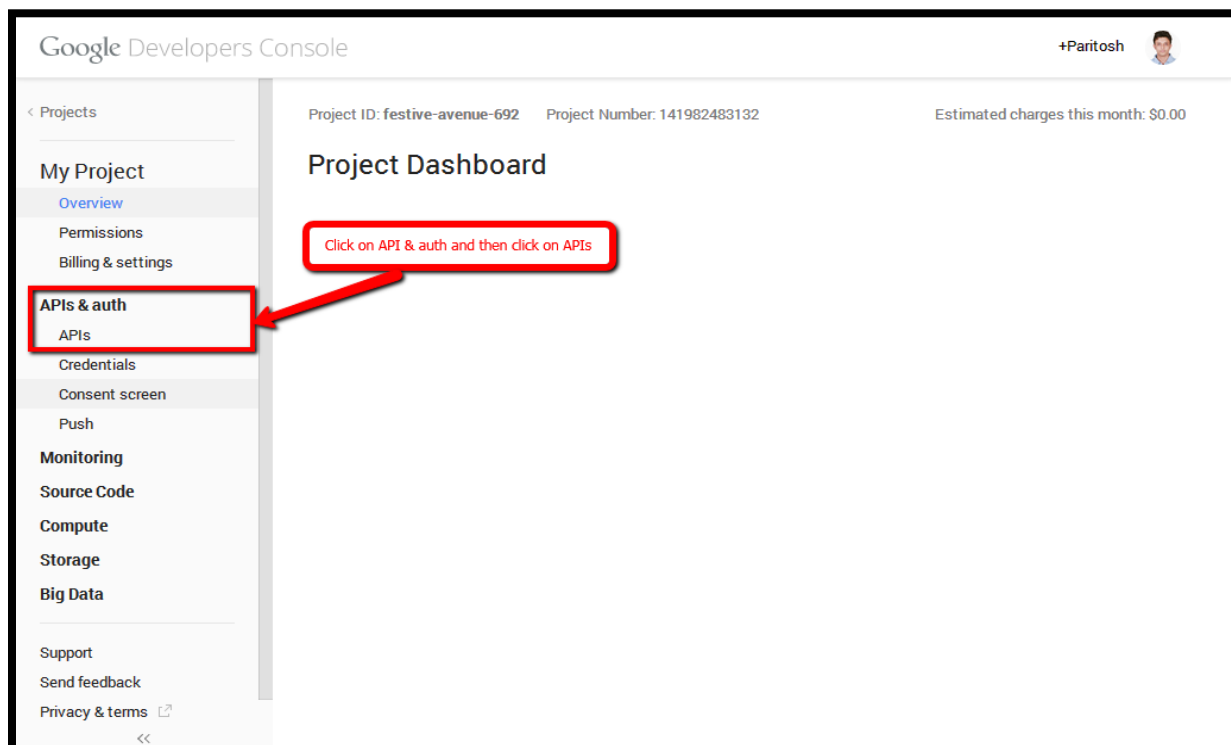
## Step -5

- User has to enter the Product Name in Project Name Field.
- Click on the Create button.



## Step -6

- Click on APIs & auth, now click on APIs.



## Step -7

- Click on "ON" button for enable Contacts API.

Google Developers Console

+Paritosh

< Projects

My Project

APIs & auth

APIs

Credentials

Consent screen

Push

Monitoring

Source Code

Compute

Storage

Big Data

Support

Send feedback

Privacy & terms

NAME	QUOTA	STATUS
BigQuery API	0%	ON
Contacts API	0%	ON
Google Cloud SQL		ON
Google Cloud Storage		ON
Google Cloud Storage JSON API		ON
Ad Exchange Buyer API	1,000 requests/day	OFF
Ad Exchange Seller API	10,000 requests/day	OFF
Admin SDK	150,000 requests/day	OFF
AdSense Host API	100,000 requests/day	OFF
AdSense Management API	10,000 requests/day	OFF
Analytics API	50,000 requests/day	OFF
Apps Activity API	10,000,000 requests/day	OFF
Audit API	10,000 requests/day	OFF

## Step -8

- Click on Credentials to obtain the required API details.

Google Developers Console

+Paritosh

< Projects

My Project

APIs & auth

APIs

Credentials

Consent screen

Push

Monitoring

Source Code

Compute

Storage

Big Data

Support

Send feedback

Privacy & terms

OAuth

OAuth 2.0 allows users to share specific data with you (for example, contact lists) while keeping their usernames, passwords, and other information private.

Learn more

Create new Client ID

Public API access

Use of this key does not require any user action or consent, does not grant access to any account information, and is not used for authorization.

Learn more

Create new Key

Compute Engine and App Engine

Learn more

CLIENT ID	141982483132-f9gv32li9vnb0tfi0f9jtj4a1mks1q8.apps.googleusercontent.com
EMAIL ADDRESS	141982483132-f9gv32li9vnb0tfi0f9jtj4a1mks1q8@developer.gserviceaccount.com

Download JSON

## Step -9

- Enter your Product URL in first text box as shown in below image.
- Enter "<http://YOUR-DOMAIN-NAME.COM/invites/gmail>" as Authorized Redirect URI  
Note: This is the URI where user will be redirected back to your website's Invite friends page after Authentication on Gmail.
- Click on Create Client ID button.

Google Developers Console

My Project

APIs & auth

APIs

Credentials

Consent screen

Push

Monitoring

Source Code

Send feedback

Create Client ID

APPLICATION TYPE

☒ Web application  
Accessed by web browsers over a network.

☐ Service account  
Calls Google APIs on behalf of your application instead of an end-user. [Learn more](#)

☐ Installed application  
Runs on a desktop computer or handheld device (like Android or iPhone).

AUTHORIZED JAVASCRIPT ORIGINS  
Cannot contain a wildcard (http://\*.example.com) or a path (http://example.com/subdir).

http://hireror.com/

AUTHORIZED REDIRECT URI  
Needs to have a protocol, no URL fragment, and no relative paths

http://hireror.com/invites/gmail

Create Client ID

Cancel

Enter your Product URL

Enter "<http://YOUR-DOMAIN-NAME.COM/invites/gmail>" as Authorized Redirect URI

Note: This is the url where user will be redirected back to his/her website's Invite friends page after Authentication on Gmail.

Now Click on Create Client ID

## Step -10

- Users can Obtain Client ID and Client Secret Key from here.

Google Developers Console

My Project

APIs & auth

APIs

Credentials

Consent screen

Push

Monitoring

Source Code

Compute

Storage

Big Data

Support

Send feedback

Privacy & terms

OAuth 2.0 allows users to share specific data with you (for example, contact lists) while keeping their usernames, passwords, and other information private. [Learn more](#)

Create new Client ID

Download JSON

Client ID for web application

CLIENT ID	141982483132-tl9d0plqaccaborj9sj0k2k3o705tjdk.apps.googleusercontent.com
EMAIL ADDRESS	141982483132-tl9d0plqaccaborj9sj0k2k3o705tjdk@developer.gserviceaccount.com
CLIENT SECRET	iORaOtt4nfsMqMJ5FW1BCBz1
REDIRECT URIS	http://hireror.com/invites/gmail
JAVASCRIPT ORIGINS	http://hireror.com/

Edit settings

Reset secret

Download JSON

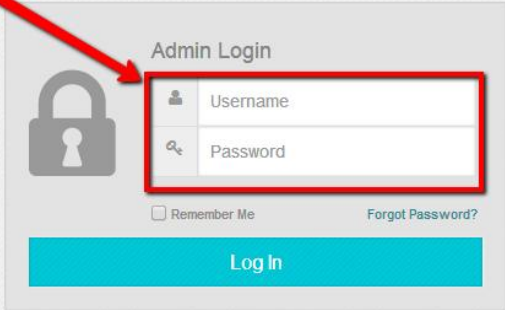
Delete

User can obtain Client ID and Client Secret Key

### Step -11

- User has to Log in into Admin site.
- User has to provide the valid Username and Password.
- Click on Login button.

Enter valid Login ID and Password and click on "Log In" button to set API settings.



The image shows a screenshot of the 'Admin Login' form. It features a lock icon on the left. The form has two input fields: 'Username' and 'Password'. Below these fields are a 'Remember Me' checkbox and a 'Forgot Password?' link. A large blue 'Log In' button is at the bottom. A red box highlights the Username and Password fields, and a red arrow points from a text box to the Username field.

Fundraising Script By : Fundraisingscript.com  
© 2014 rockersinfo.com All rights reserved

### Step -11

- User has to click on Setting at Admin Site.
- Select Google tab.
- Enter Google Client ID in Consumer Key.
- Enter Google Client Secret Key in Consumer Secret.
- Click on Update button to update the details.

Google setting (APPS)

Google setting

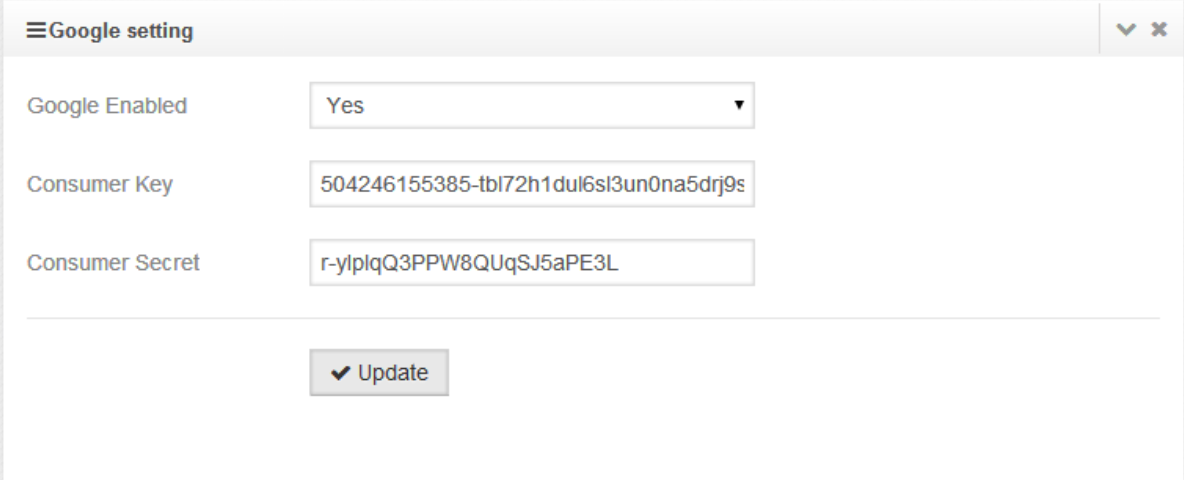
Google setting

Google Enabled Yes

Consumer Key 504246155385-tbl72h1dul6sl3un0na5drj9s

Consumer Secret r-ylplqQ3PPW8QUqSJ5aPE3L

Update



The image shows a screenshot of the 'Google setting (APPS)' form. It has a header with a gear icon. Below the header is a breadcrumb trail 'Google setting'. The form has a title bar 'Google setting' with a close button. The form contains three fields: 'Google Enabled' with a dropdown menu set to 'Yes', 'Consumer Key' with the value '504246155385-tbl72h1dul6sl3un0na5drj9s', and 'Consumer Secret' with the value 'r-ylplqQ3PPW8QUqSJ5aPE3L'. At the bottom is a blue 'Update' button with a checkmark icon.

**Step -12:** Twitter API configuration at Admin site is done now.